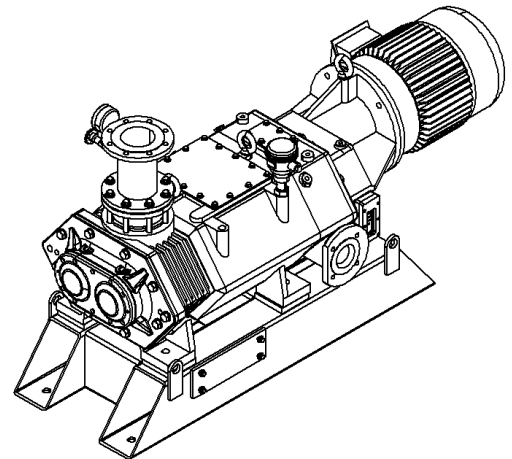
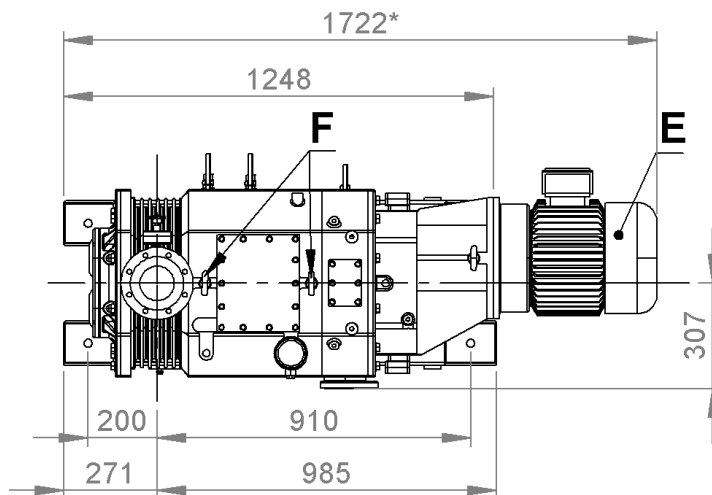
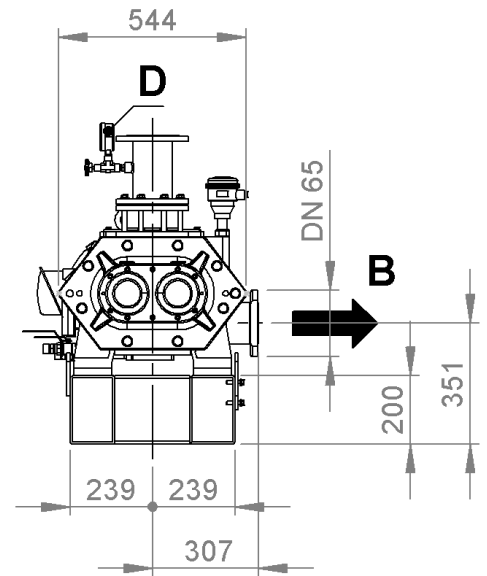
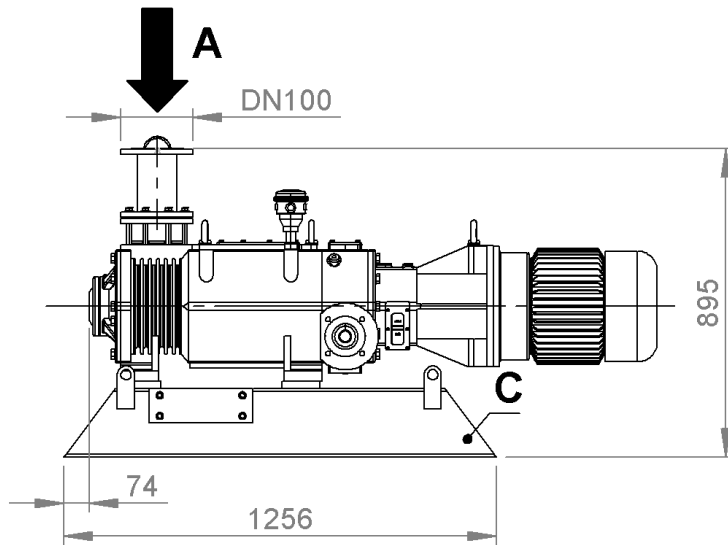


SCREWVAC SD 650



**Misure soggette a variazioni in funzione della marca del motore
 *Dimensions subject to changes depending on the motor brand
 *Données sujettes aux variations en fonction de la marque du moteur
 *Die Maße können aufgrund von Motorzeichen ändern
 Medidas sujetas a variación en función de la marca del motor

I

GB

F

D

E

| | | | | | |
|----------|-------------------------|------------------|--------------------|-------------------|-------------------------|
| A | Aspirazione | inlet | Aspiration | Einlass | Aspiración |
| B | Scarico aria | Exhaust | Sortie de l'air | Luftauslass | Salida de aire |
| C | Basamento | Baseplate | Base | Untergestell | Base |
| D | Indicatore di vuoto | Vacuum indicator | Indicateur de vide | Vakuumanzeige | Indicador de vacío |
| E | Motore elettrico | Electric motor | Moteur électrique | Elektromotor | Motor electrico |
| F | Golfaro di sollevamento | Lifting eyebolt | Anneau de levage | Aufhebenöschraube | Gancho de levantamiento |



SCHEDA TECNICA
DATA SHEET
FICHE TECHNIQUE
TECHNISCHE KARTE
ESQUEMA TECNICO

SCREWVAC
SD 650

Pag.: 1/2

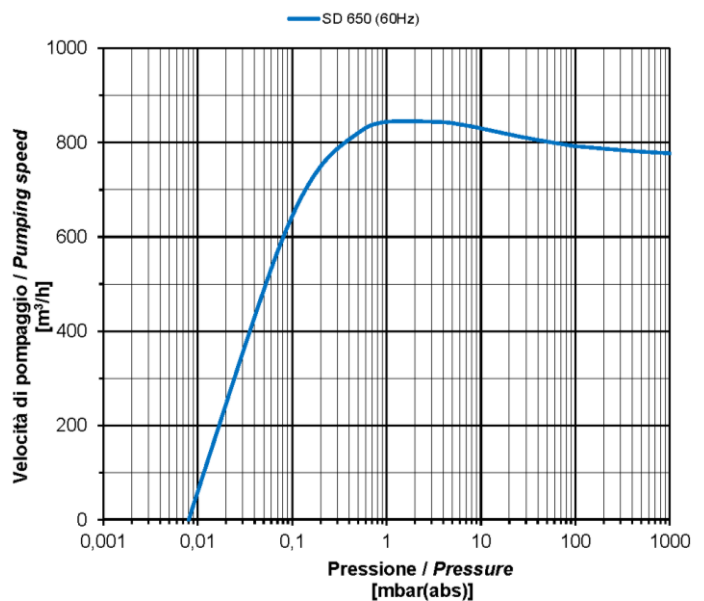
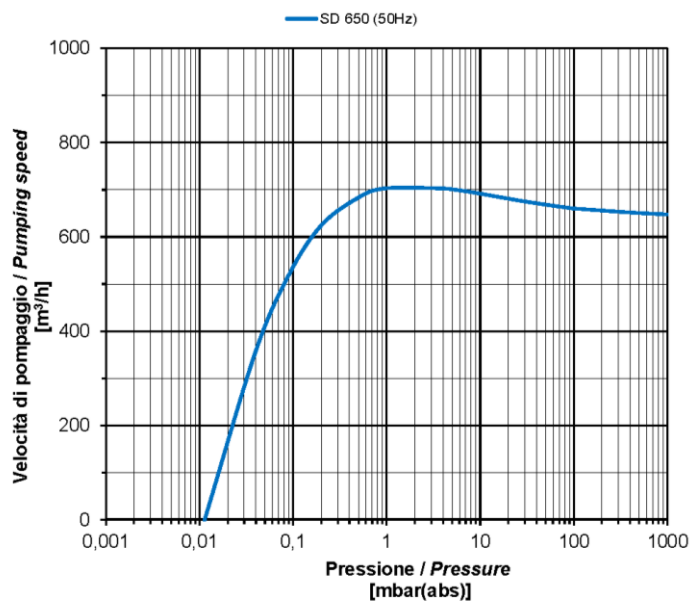
Data:
 01/2021

ST4640.00

| | | SCREVVAC SD 650 | |
|---|----------------------|-----------------|---------------------|
| Portata nominale* Nominal speed* Débit nominal* Nennsaugvermögen* Caudal nominal* | m ³ /h | 50Hz | 660 |
| | | 60Hz | 800 |
| Pressione finale*(assoluta) Ultimate pressure* (abs.) Pression limite* (abs.) Enddruck* (abs.) Presión final* (abs.) | mbar (Torr) | 50Hz | < 0,01 (< 0,0075) |
| | | 60Hz | |
| Potenza motore # / Numero di giri Motor power # / Rotational speed Puissance moteur # / Numéro de révolutions Motorleistung # / Drehzahl Potencia motor # / Velocidad de giro | kW | 50Hz ~3 | 15 |
| | min ⁻¹ | | 2900 |
| | kW | 60Hz ~3 | 18.5 |
| | min ⁻¹ | | 3500 |
| Caratteristiche motore elettrico Electric motor characteristics Caractéristiques moteur électrique Motoreigenschaften Características motor eléctrico | | 50Hz ~3 | IM B5 400/690 V±10% |
| | | 60Hz ~3 | IM B5 480/828 V±10% |
| Livello di pressione acustica Sound pressure level Niveau de pression acoustique Schalldruckpegel Nivel de presión acústica | dB(A) EN ISO 2151 | 50Hz | < 80 |
| | | 60Hz | < 82 |
| Acqua di raffreddamento (@ 15°C) Cooling water (@ 15°C) Eau de refroidissement (@ 15°C) Kühlwasser (@ 15°C) Agua de enfriamiento (@ 15°C) | l/min | | 15 - 20 |
| Carica olio Oil capacity Charge d'huile Ölfüllmenge Carga de aceite | l | | 2,5 |
| Peso totale Total weight Poids total Gesamtgewicht Peso total | kg | Bareshaft | 630 |

*Secondo accordi PNEUROP 6602.
*According to PNEUROP standard 6602.
*Selon la norme PNEUROP 6602.
*Nach der PNEUROP Norm 6602.
*Según la normativa PNEUROP 6602.

#Valido per temperature fino a 40°C e altitudini inferiori a 1000 m.
#Valid for temperatures up to 40°C and altitudes lower than 1000 m.
#Valable pour températures jusqu'à 40°C et pour altitudes inférieures à 1000 m.
#Gültig für Temperaturen bis 40°C und für Höhen weniger als 1000 m.
#Válido para temperaturas hasta 40°C y altitudes inferiores a 1000 m.



SCHEDA TECNICA
DATA SHEET
FICHE TECHNIQUE
TECHNISCHE KARTE
ESQUEMA TECNICO

SCREVVAC
SD 650

Pag.: 2/2

Data:
01/2021

ST4640.00